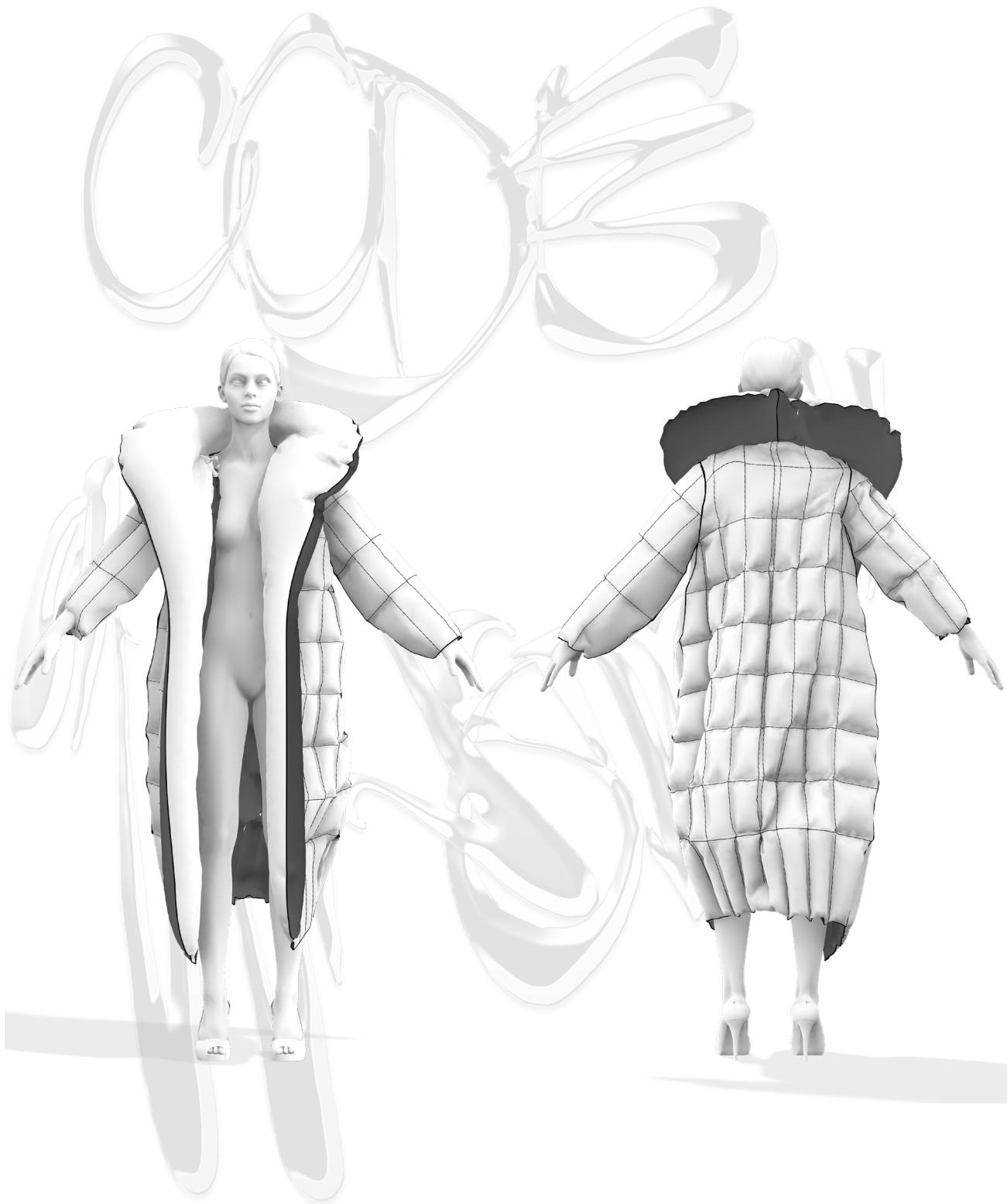




HYPERTECHPACK



DESCRIPTION

Ankle length puffer coat with oversized lapel

ARTICLE NUMBER

1. 3DH0011
2. 3DH0012
3. 3DH0013
4. 3DH0014

(Please refer to Colour Variations sheet)

MATERIAL

Outer shell, Brand and Size Label:

100% Recycled Polyethylene (rPE)

Filling: rPE fibre fill and textile waste

PRINT & COLOUR

1. Pelt_01

Code_Waste

(3DH0011)

2. Pelt_02

Code_Waste

(3DH0012)

3. Pelt_03

Code_Waste

(3DH0013)

4. PANTONE 13-0550 TCX | Lime Punch

Code_Waste

(3DH0014)

TRIMS

Brand and Size Label



PATTERN PIECES

Exploded view of pattern pieces on one side of the coat



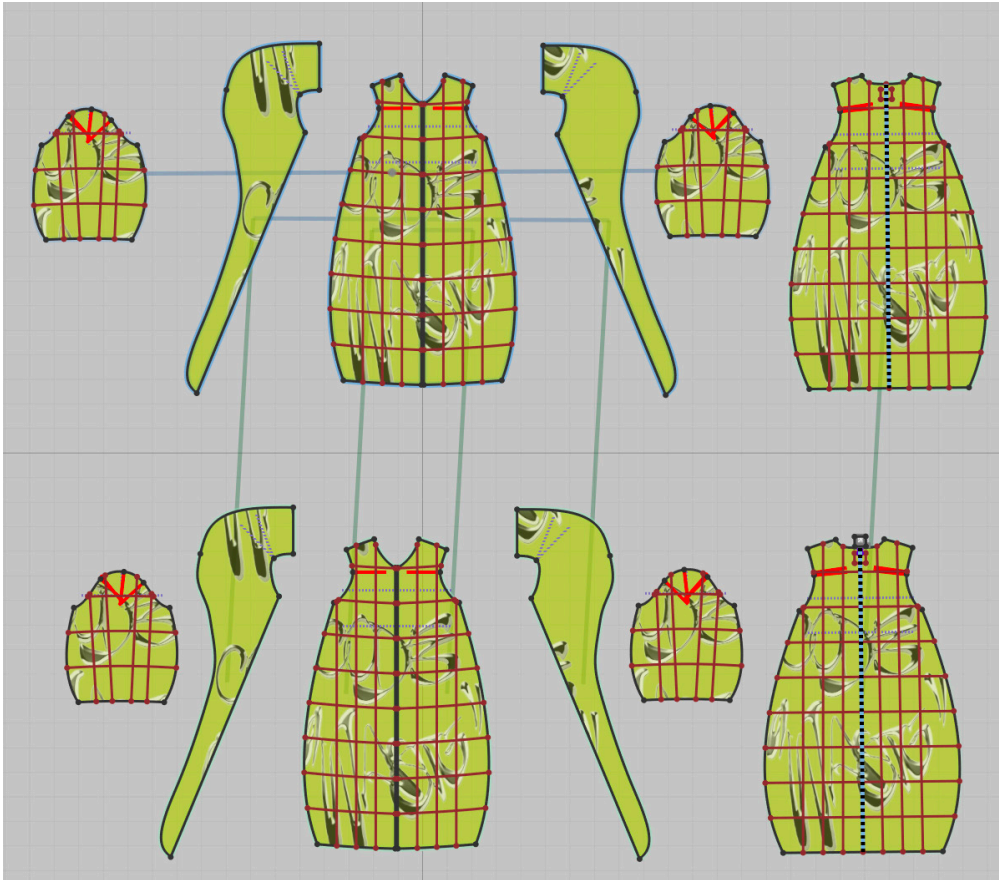
DISECTION OF THE PATTERN PIECES

2 rPE layers
Textile waste and rPE fibre filling





2D PATTERN



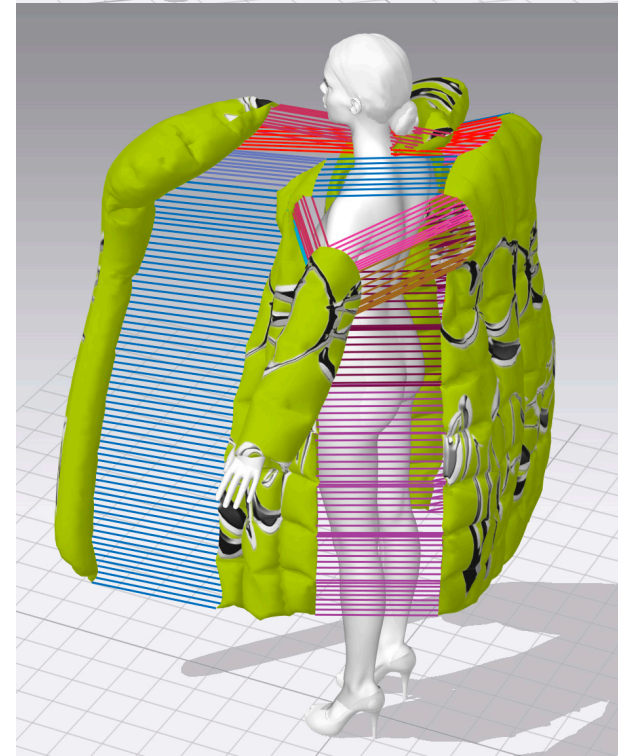
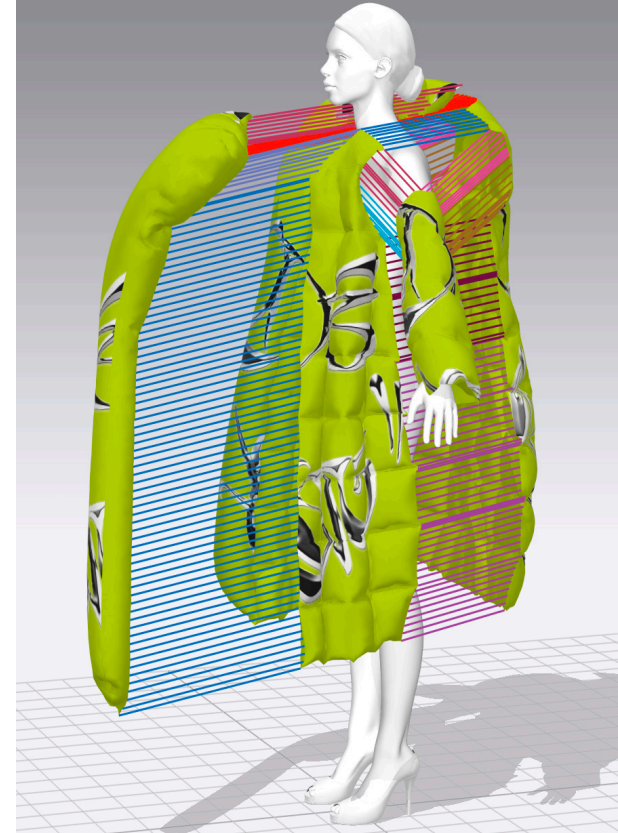
RED lines signify the sewing lines of the puffer

SEWING

Fabric is double and filled with textile and rPE fibre fill

STEPS

1. Sew outer seams
2. Fill in the whole pattern piece(s)
3. Sew over the internal lines



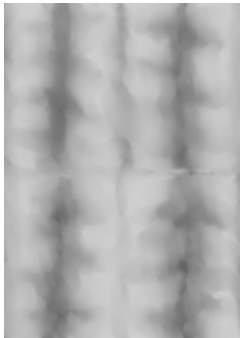


PRINTS



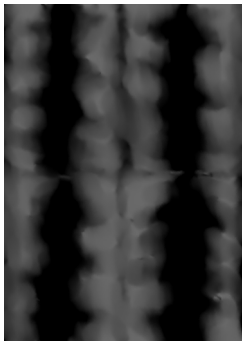
PRINT:

Pelt_01



PRINT:

Pelt_02



PRINT:

Pelt_03



PRINT:

Code_Waste

COLOUR VARIATIONS

3DH0011

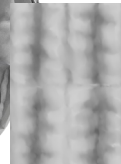


Pelt_01



Code_Waste

3DH0012



Pelt_02



Code_Waste

3DH0013



PANTONE
13-0550 TCX
Lime Punch



Code_Waste

3DH0014



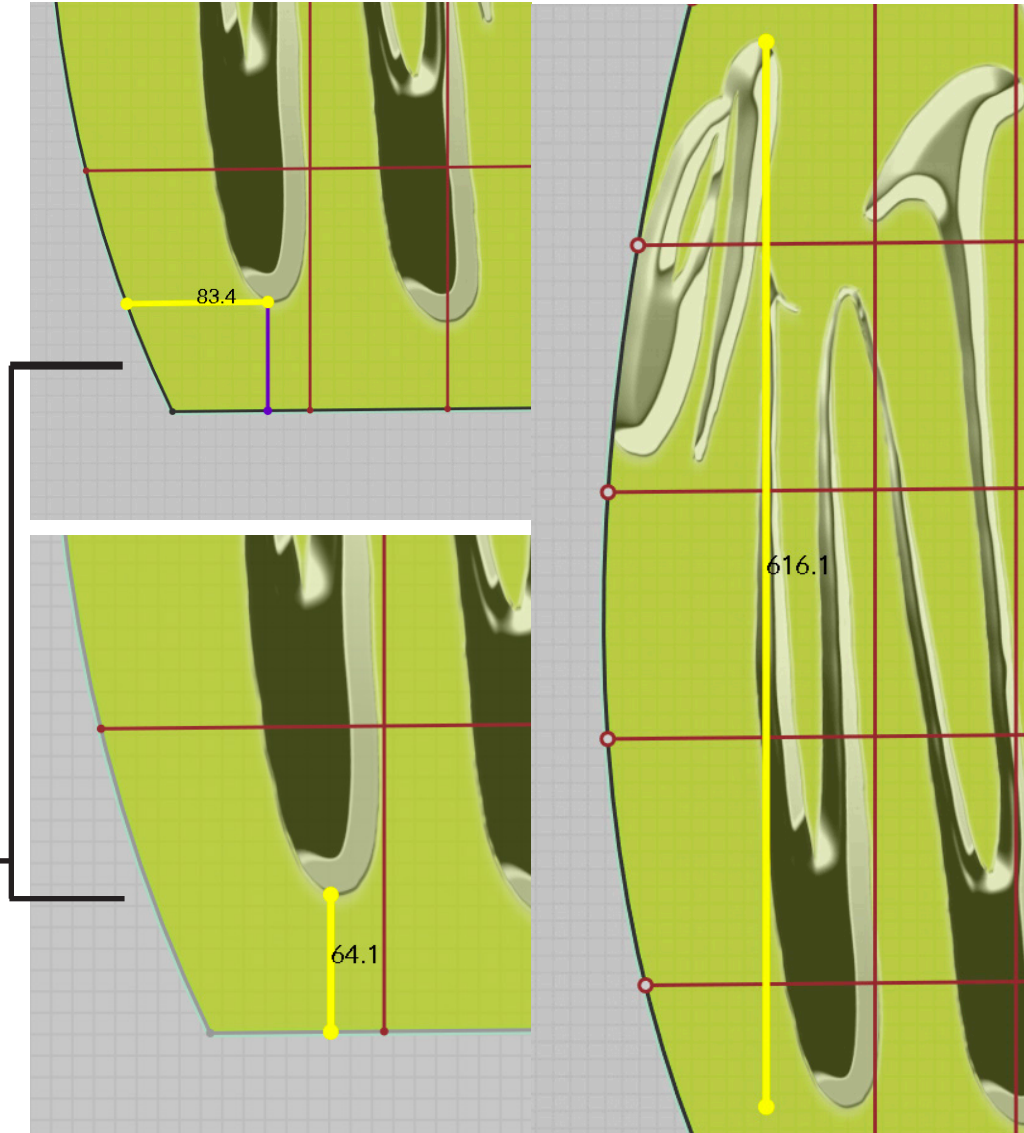
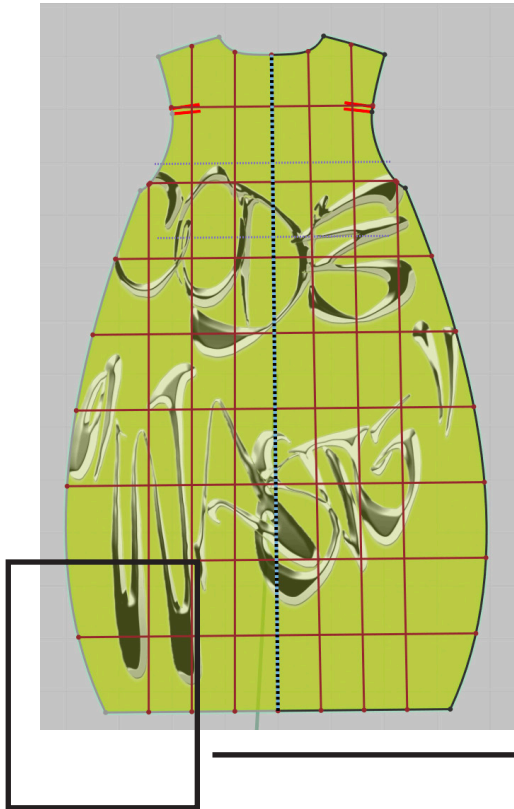
Pelt_03



Code_Waste



PRINT PLACEMENT - ALL OVER PRINT



All over print positioned **64.1mm** from the bottom and **83.4mm** from the side seam (please refer to picture on the above)

and **616.1mm** high in size.

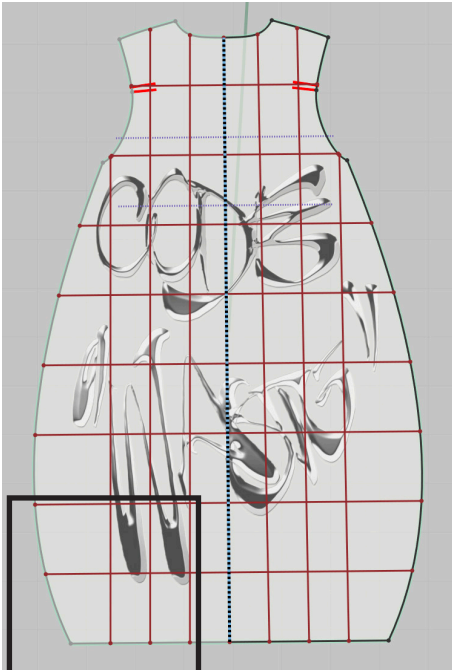
N.B: Apply these print measurements to this all-over print coat (3DH0013)



3DH0013

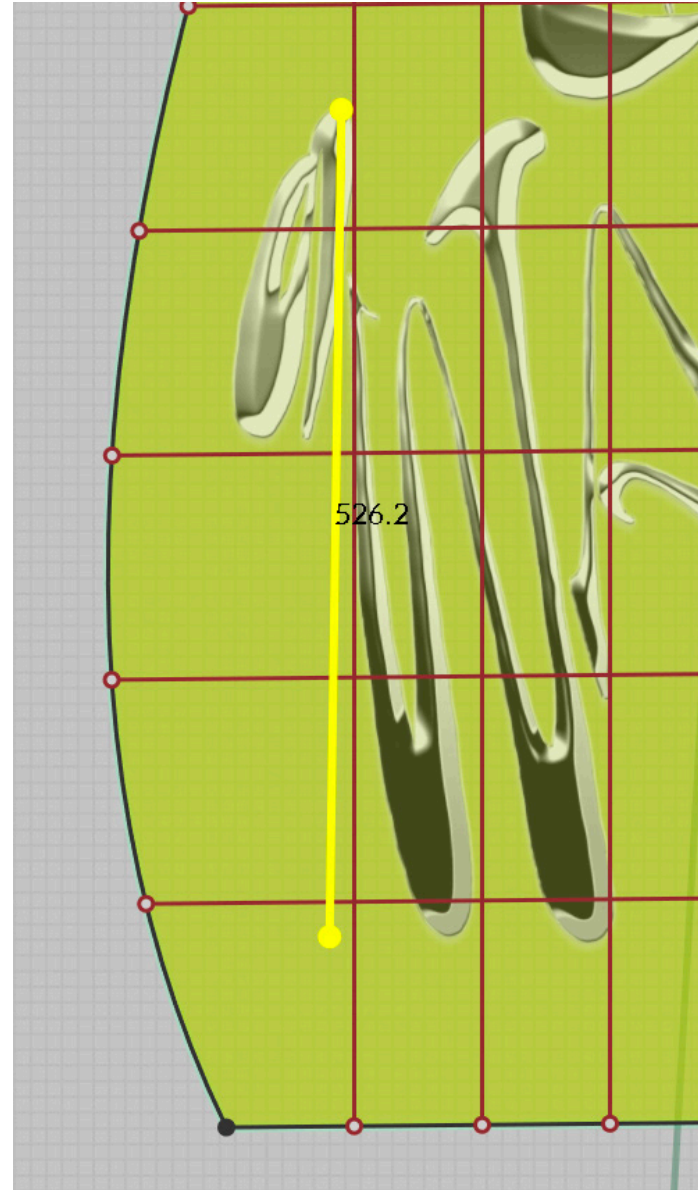
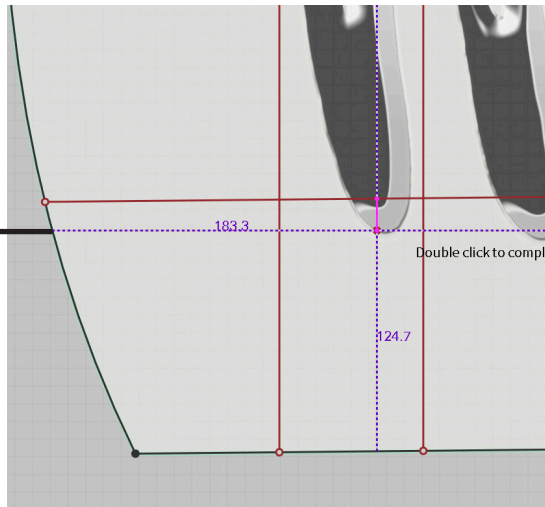


PLACEMENT PRINT



Placement print positioned
124.7mm from the bottom
and 183.3mm from the
side seam (please refer to
picture on the left)

and 526.2mm high in size.

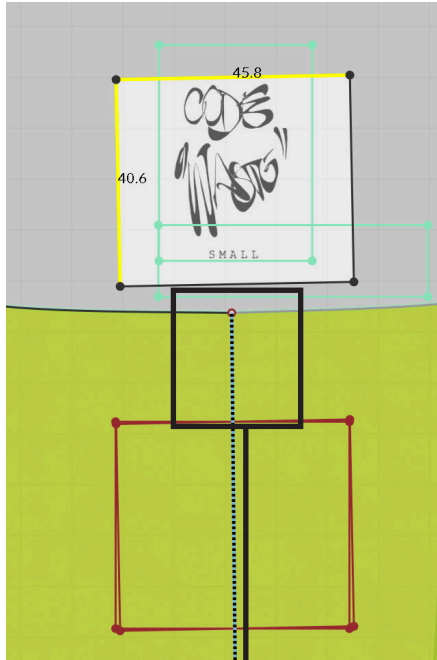


**N.B: Apply these
print measurements
to placement print
coats (3DH0011,
3DH0012,3DH0014)**

3DH0011, 3DH0012, 3DH0014



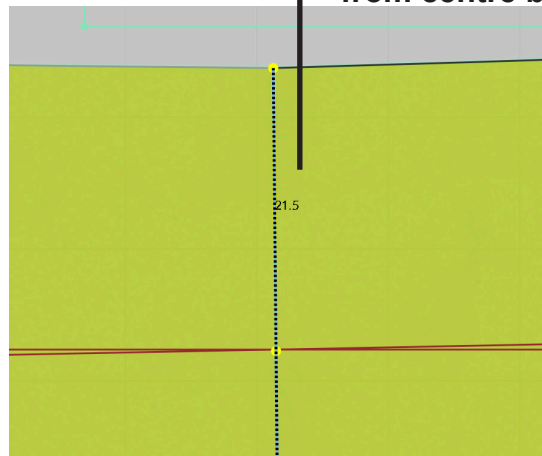
TRIMS - LABEL



45.8mm x 40.6mm
Size and Brand Label

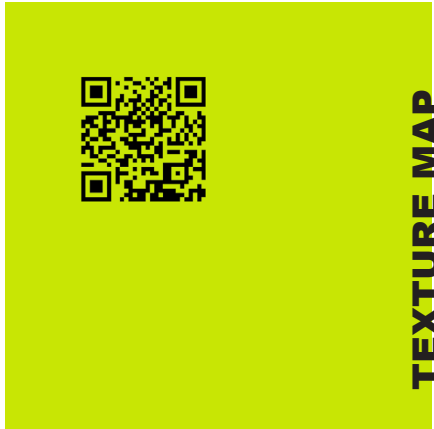
Topstitched on top and
bottom edges at **3mm**

Positioned **21.5mm** below
from centre back

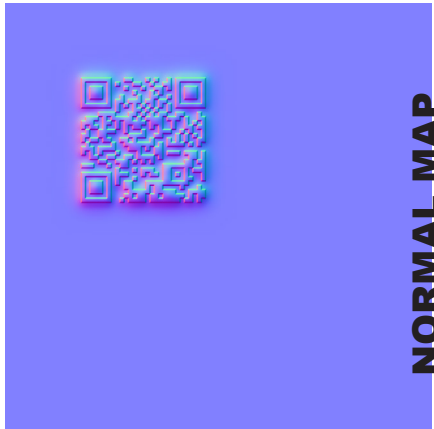




TRIMS - BUTTON



TEXTURE MAP

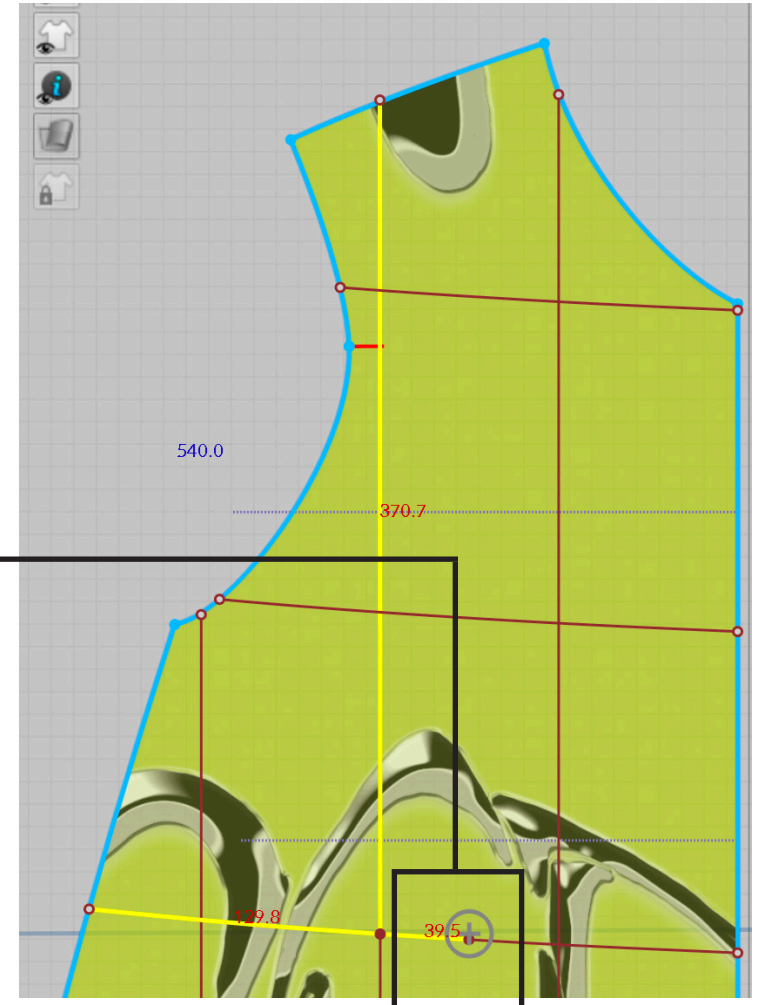


NORMAL MAP

2_Shank_Button_02
Width: 20mm
Thickness: 0.6mm



Positioned **370.7 mm** from
the first vertical internal line
169.3mm from the third
horizontal line



QR CODE should lead to the following
website



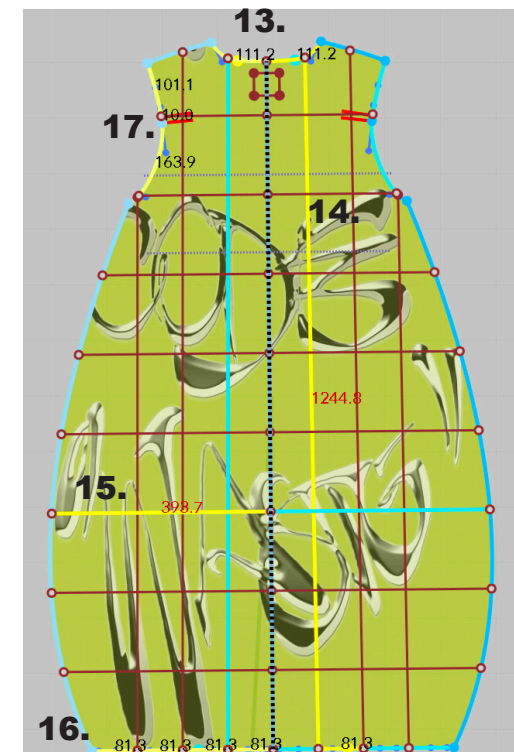
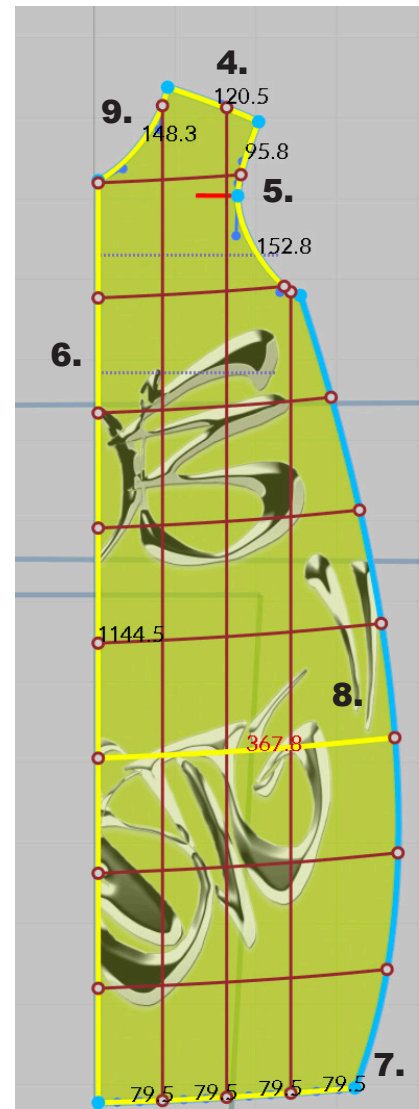
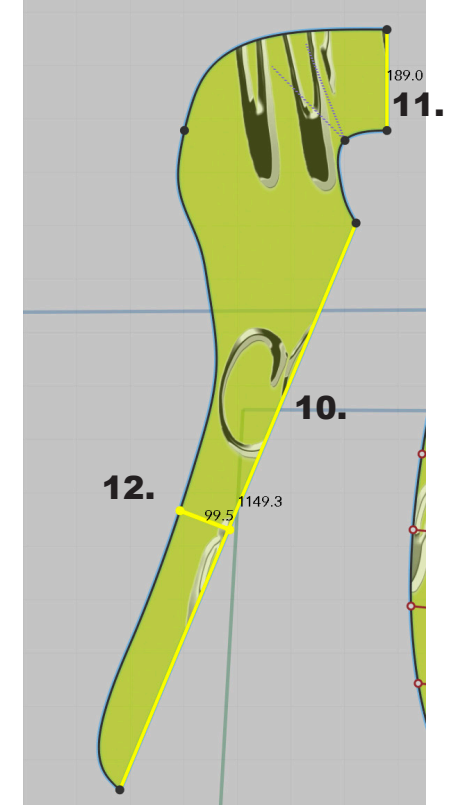
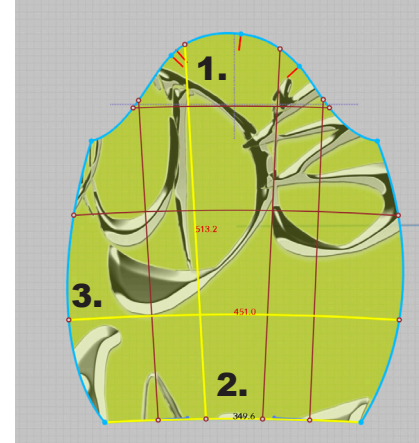
[https://diamantevolpe.tumblr.com/tagged/
CODEWASTE](https://diamantevolpe.tumblr.com/tagged/CODEWASTE)



HOW TO MEASURE

	Size S (mm)	Tolerance (mm)	First Sample Measurements (mm)
1. Sleeve Length	513	5	
2. Sleeve Opening	350	0	
3. Sleeve Width	451	5	
4. Shoulder Width	120.5	0	
5. Front Armhole	249	0	
6. Front Panel Length	1144.5	5	
7. Hem Width front Panel	318	5	
8. Front Panel Width	368	5	
9. Neck Circumference	148	0	
10. Lapel Length (without half neck circumference)	1144.5	5	
11. Lapel Width at neck	189	1	
12. Lapel Width at mid panel	99.5	5	
13. Back panel neck width	222	0	
14. Back panel Length	1245	5	
15. Back panel Width	797	5	
16. Back panel Hem	650	5	
17. Back Armhole	265	0	

N.B: some of the measurements in the pictures are not added up, refer to the measurements listed above for the correct measurements.





LOOKS OVERVIEW



0003
11/20/17

